



MEPHCON

INTEGRATION TECHNOLOGY PVT. LTD.

Committed to Excellence

COMPANY PROFILE

MEPHCON INTEGRATION TECHNOLOGY PRIVATE LIMITED

Plot no 51-B, Shed G6 Industrial Shed, opp. Continental
Bommasandra Industrial Area, Bangalore 560099

+91 76765 44293 | sales@mephcon.com



Who We Are

MEPHCON Integration Technology Pvt. Ltd. has established a reputation for providing outstanding value to our clients. We have mastered the art of building projects with cost-effective solutions, meeting the modern demand for efficiency and innovation. Our strength lies in our ability to break through traditional industry boundaries, challenge norms, and constantly set new standards.

We bring extensive experience and proficiency in serving diverse industrial segments such as Pharmaceuticals, Chemicals, Automobile, FMCG, Paint, Adhesives, and laboratories. Our team is well-versed in handling projects from project scheduling and consultant coordination to construction management and on-site manpower handling. We take pride in our ability to provide comprehensive services across all engineering disciplines.



What We Stand For

Vision

To be a trailblazer in the industry, consistently challenging norms and delivering unparalleled value to our clients. We aim to build a legacy of innovation, integrity, and excellence in every project we undertake.

Our Pursuit

Mission

To meet all possible customer demands and understand their needs to see a satisfied customer. To provide engineering solutions to our clients when they are most needed, by thinking outside the box.

Safety Policy

MEPHCON is firmly committed to a policy that allows all work activities to be carried out safely, with all precautions taken to eliminate (or reduce) risk to the health, safety, and welfare of employees, authorised visitors, and anyone else who may be affected by operations. Our team is trained and well-acquainted with OSHA (Occupational Safety Health Hazardous Act) guidelines.

What We Offer

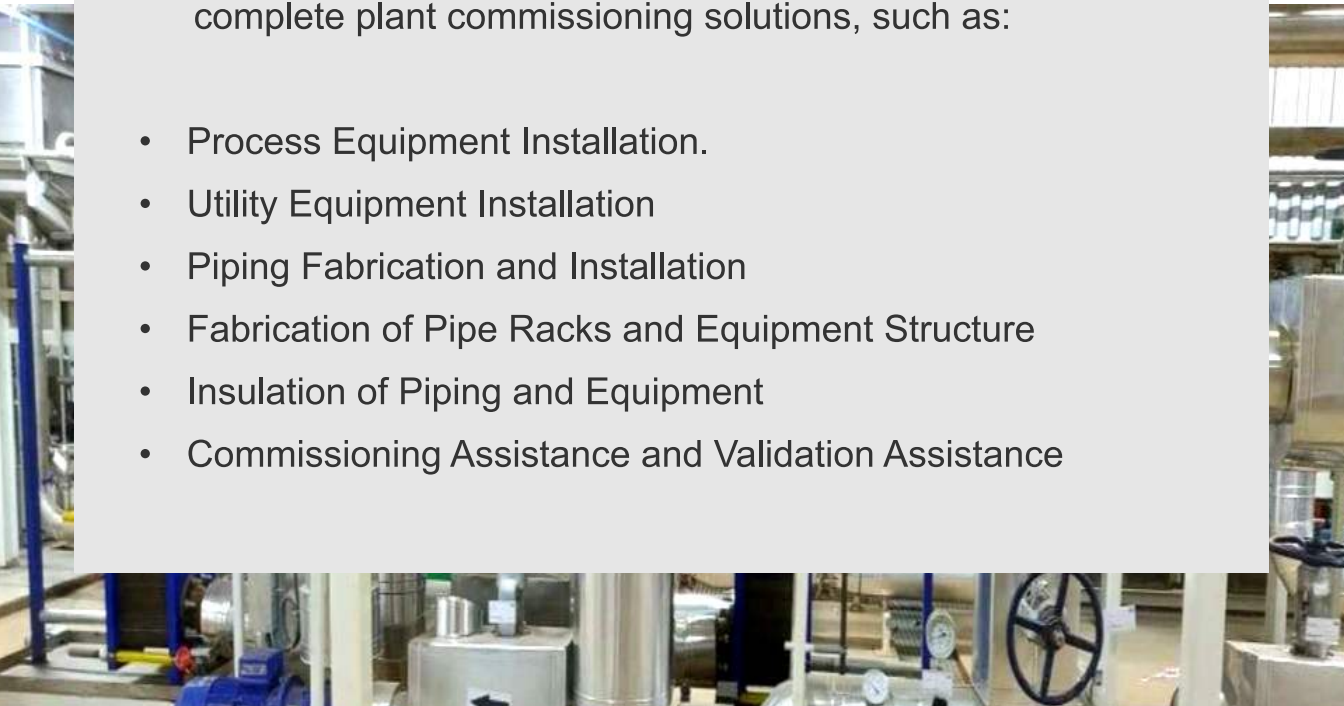
MEPHCON specialises in project support at every stage, leveraging our extensive project experience to ensure on-time completion.

Project contracting is one of our core competencies, and we specialise in key segments such as:

A. Commissioning of Mechanical and Piping Equipment

In process and utility systems, piping, and plumbing, we have a knowledgeable and capable team to provide complete plant commissioning solutions, such as:

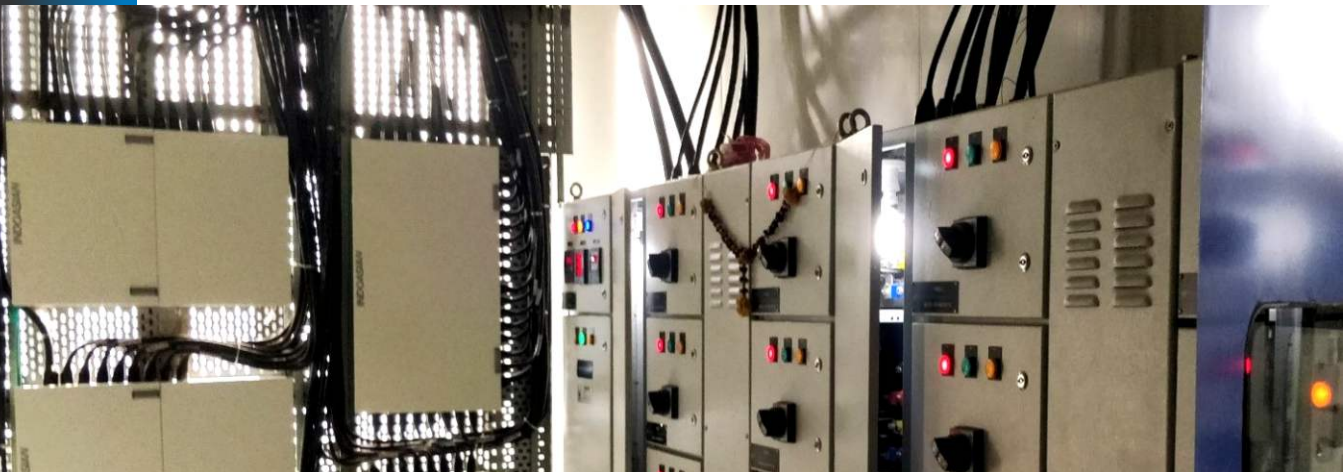
- Process Equipment Installation.
- Utility Equipment Installation
- Piping Fabrication and Installation
- Fabrication of Pipe Racks and Equipment Structure
- Insulation of Piping and Equipment
- Commissioning Assistance and Validation Assistance



B. Electrical and Power Systems

We have a substantial presence in the sphere of electrical energy transmission and distribution, providing a comprehensive variety of electrical overhead and subsurface system supply, execution, testing, and commissioning services. In addition, the organisation is involved in the Engineering Construction of Industrial Electrical system which includes LT system, ELVS system with testing, commissioning and its documentation.

We deliver turnkey project jobs such as engineering, production, installation, and commissioning of LT and HT system, Power Control Centres, Motor Control Centres, and Automatic Power Factor Correction Panels.



C. HVAC and Clean Room

We have highly skilled staff for HVAC systems for a variety of industrial projects. Following are key areas for work:

- High side (Chiller, Cooling tower, pump etc.) equipment installation, testing, commissioning
- Low side (AHU, DX unit, Air distribution products) installation for comfort and clean room application.
- Qualification documents (DQ,IQ,OQ,PQ)
- Service after sales for key equipment in coordination with vendors
- Validation of system as per GMP guidelines

D. Fire & Environment

We provide installation of fire fighting systems that comprise:

- Fire pump room, hydrant & riser system
- Sprinkler system
- Fire suppression and Fire Alarm
- Smoke Control System

Our execution, testing & commissioning meets the fire and safety NBC, TAC & OSHA guidelines.

E. Process Instrumentation and Automation

We provide:

- Installation of Field Instruments and Control System
- Process Instrumentation Installation Services
- Automation Equipment Installation Support

Whether your project entails instrumentation and controls upgrades, retrofits or new construction, depend on us as your process control equipment installation solution.



Our Pioneers

MEPHCON, an emerging company, draws on over a decade of industry experience. Our founders have over 100 years of combined experience in project design, EPC, and construction. With this wealth of knowledge, we aim to position ourselves as industry leaders capable of delivering innovative solutions that exceed expectations. We strive to achieve the desired objectives for our clients by ensuring excellence in engineering design, construction, and overall project execution.

Team Harmony

A dedicated team of over 250 professionals, including engineers, technical experts, and skilled support staff, drives our success. We are actively expanding our talent pool to ensure that our team's expertise covers a wide range of project work. We are committed to strengthening our capabilities to take on larger and more complex projects in the future.





Mahindra



Advinus



ATUL BIOSCIENCE LTD

PARAS INTERMEDIATES PRIVATE LTD.



A few of our Esteemed Clients

MEPHCON

INTEGRATION TECHNOLOGY PVT. LTD.

MEPHCON Integration Technology Private Limited
Plot no 51-B, Shed G6 Industrial Shed, opp. Continental
Bommasandra Industrial Area, Bangalore 560099

+91 76765 44293 | sales@mephcon.com